

**SIEMENS**



**LOGO! Simply ingenious. Simply more.**

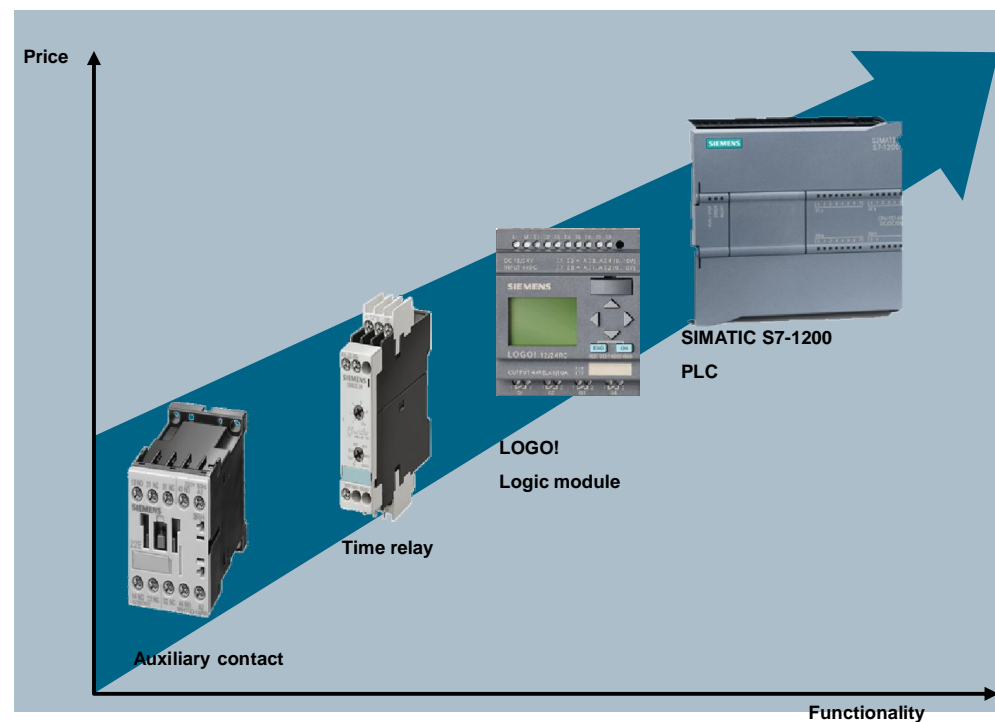
## LOGO!

### The ideal solution in between auxiliary relays and controllers

LOGO! closes the gap between relays, auxiliary contactors, timers and the world of controllers

LOGO! means connecting functions logically with a mouse-click instead of wiring

LOGO! is the perfect introduction into the world of automation just below the world of controllers



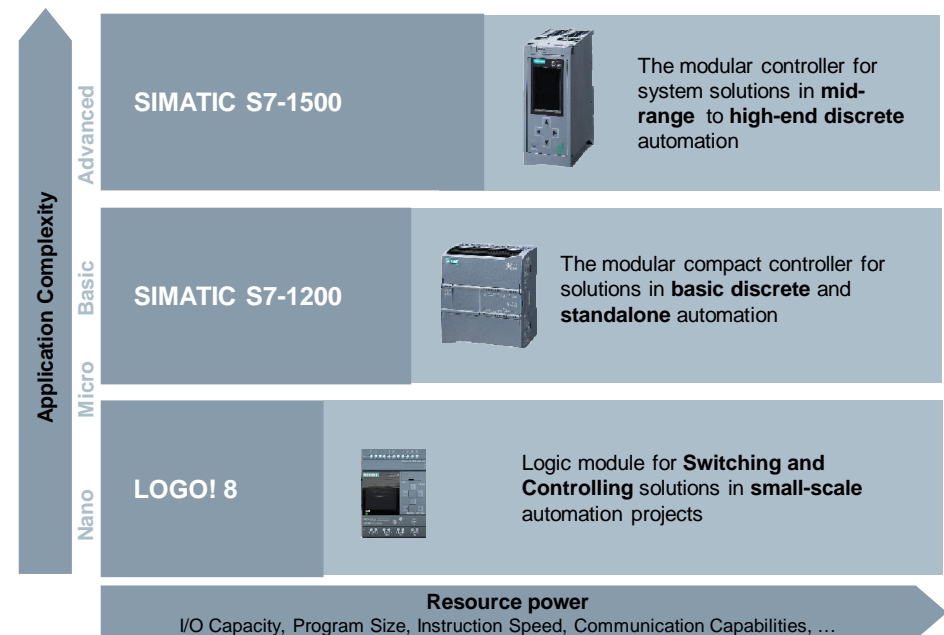
## LOGO! Positioning

**LOGO!** - for simple automation tasks

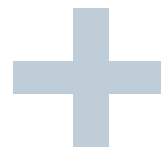
**LOGO!** – mainly (mostly) for stand alone applications

**LOGO!** - offers ready to use function blocks for various applications, other than in controllers where these functions must to be programmed explicitly

**LOGO!** - fits into the standard cabinets for building applications and is certified for domestic areas (limit Class B Group 1)



LOGO! currently consists of two product lines



The well proven LOGO! 0BA6 devices with and without display, each of them available with 4 different power options

Two LOGO! 0BA7 devices offer Ethernet communication for local networks  
 LOGO! ⇔ LOGO!, SIMATIC S7 and HMI

# LOGO! Product Overview



12/24 RC(o)    24 C(o)    24 RC(o)    230 RC(o)

## LOGO! ..0BA6



12/24 RCE



230 RCE

## LOGO! ..0BA7



DM 16 (3x)    DM 8 (4x)    AM2    AM2 RTD    AM2 AQ    CM AS-i    CM EIB/KNX



## LOGO! TD

4 basic devices each with or without display, PC connection via LOGO! cable  
8 inputs, 4 outputs, expandable to max. of 24 DI, 16 DO, 8AI and 2 AO

Voltage alternatives

- 12/24 V DC, relay outputs 10A, 4 inputs for use as 0-10V AI
- 24 V DC, transistor outputs (300 mA), 4 inputs for use as 0-10V AI
- 24 V AC DC, relay outputs 10 A
- 115 -240 V ACDC, relay outputs 10A

2 basic devices with Ethernet interface, standard SD card slot

8 inputs, 4 outputs, expandable to max. of 24 DI, 16 DO, 8AI and 2 AO

Voltage alternatives

- 12/24 V DC, relay outputs 10A, 4 inputs for use as 0-10V AI
- 115 -240 V ACDC, relay outputs 10A

## LOGO! Highlights

### Simple

- intuitive, easy to handle software for Windows, Linux and MAC
- Use possible without specific training courses

### Space saving

- Replaces many conventional components
- Reduces size of cabinets
- Reduced wiring efforts

### Economical

- Short commissioning time
- Reduced stocks
- Getting familiar in no time



### Modular expandable

- Optimized configuration
- Expandable at any time
- For all common voltages

### Integrated display for

- Messages
- Changes of parameters
- Simple program changes

## LOGO! – Example Applications



### Elementary machines

- Simple packaging machines, waste compactor
- Conveyer belts, sorting systems, feeding systems
- Handling machines, sterilizers



### Building automation

- Light control (panic-, central- random circuit)
- Expansion of heater systems,
- Door- and gate control, access control

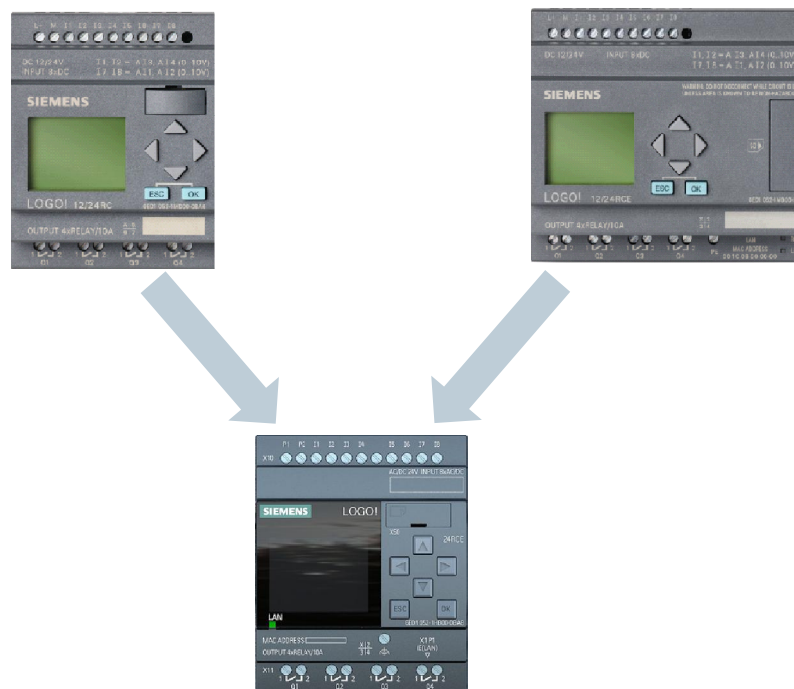


### Other applications

- Pumping stations, special (utility) vehicles
- Sauna, whirlpools, swimming pools
- Animal breeding and feeding systems (mobile henhouse, pond farming, fish tank, terrarium.....),

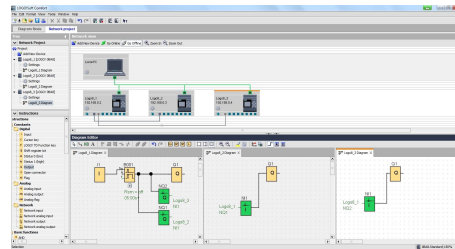
## Coming soon: LOGO! 8

The LOGO! modules  
0BA6 and 0BA7  
will be replaced by a completely  
new hardware set, the LOGO! 8.



LOGO! 0BA6 and 0BA7 will remain unchanged as standard products for at least one year after the release of LOGO! 8

## LOGO! 8 – The new components



### The innovated LOGO! system consists of:

#### LOGO! Hardware

- 4 basic modules, display with 6 lines/16 characters, 4 basic modules without display, all with Ethernet interface and WEB Server
- 7 Digital expansion modules
- 3 Analog expansion modules

LOGO! Soft Comfort V8 simple programming software, now with network view available

LOGO! CMR 200 for communication via GSM, GPS and for time synchronization

LOGO! CSM Switch with 4 ports, one port at the front for distribution boards

LOGO! Power supplies

## LOGO! 8 Highlights

All LOGO! 8 basic modules offer communication via Ethernet +

LOGO! ↔ LOGO!

LOGO! ↔ HMI

LOGO! ↔ S7-Controller

New display +

6 lines, each 16 characters

3 background colors

New LOGO! text display

6 lines, each 20 characters

3 background colors

2 Ethernet ports

4 Function keys



LOGO! Soft Comfort V8 +

Single diagram mode and network mode

Communication via drag & drop

Integrated WEB-Server +

No programming needed

Web-View identical to LOGO! Display or LOGO! TDE

LOGO! CMR +

Communication via SMS

GPS position detection

Time synchronization

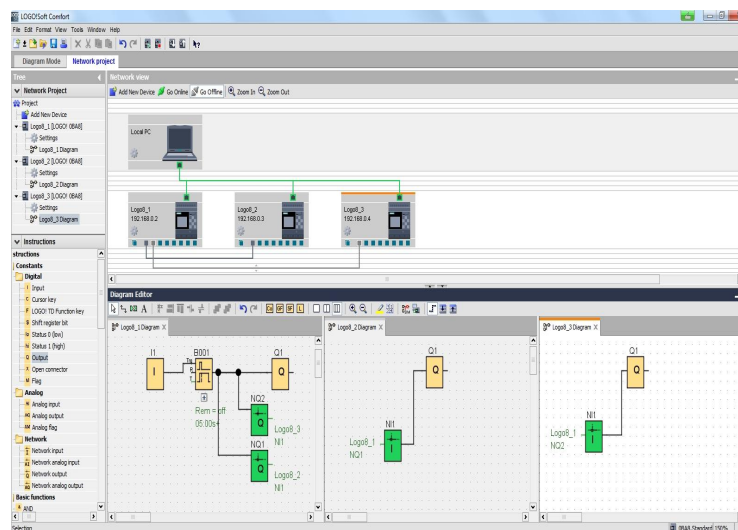
Stand alone mode

## LOGO! 8 Software Innovations

- LOGO! Soft Comfort V8
- Simplified commissioning of Ethernet Communication
  - Automatic setting of the IP-address (temporary IP-Assignment)

### Innovations

- Program view after Upload
- Referencing now done graphically
- Astronomical timer now including On-/ Off- delay



### Single diagram mode

- For Stand-alone applications (like today)

### Network mode

- max. 16 devices in network view
- 3 programs visible on the screen
- All individual programs are stored in one project file

## LOGO! 8 Additional Components

### LOGO! CMR 200 Communication module for GSM and GPS

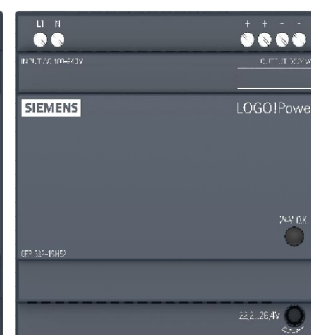


Remote access to LOGO! 8 via SMS (send/receive)  
Position detection via GPS, i.e. for container tracking  
Time synchronization  
Commissioning via WEB Browser



### LOGO! CSM

Switch with 4 Ports  
one of them accessible from the front

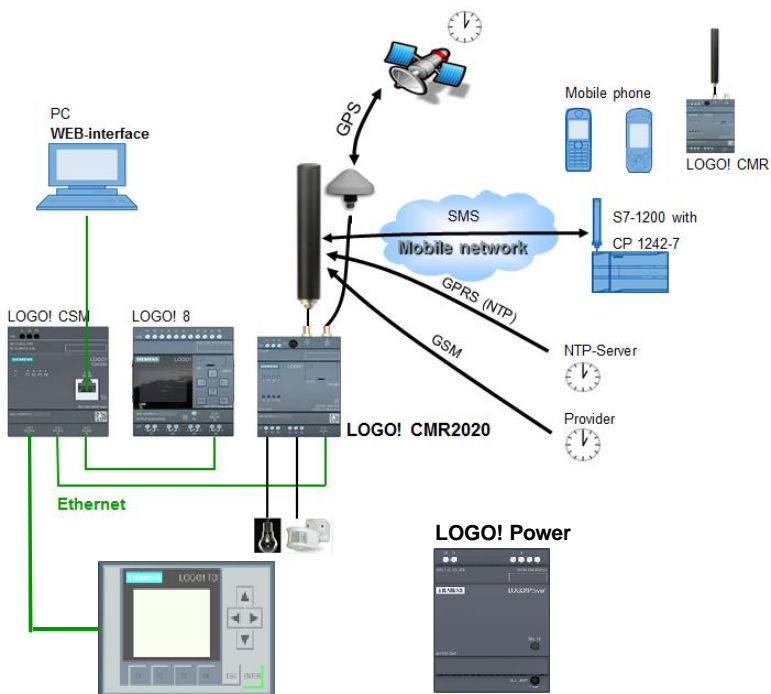


### LOGO! Power

3 versions for 24 V  
1,3A; 2,5A and 4A  
2 versions for 12 V  
1,9A; and 4,5A  
Additional devices for 5V and 15V available



## LOGO! 8 - System Features



### New Hardware

- Space saving due to only 4 TE (= MW module widths)
- No more specific programming cable or LOGO! TD cable (additional space and cost savings)
- More digital- and analog outputs
- All functions and all voltage versions
- LOGO! CMR communication module
- All components in an innovated, modern design

### Innovated displays for LOGO! and LOGO! TDE

- Twice as much information within the message text
- Clear operator information with less abbreviations for better understanding
- Clear signal colors

### Integrated WEB-Server

- Simple access via WLAN and Internet for remote monitoring and control
- without any HTML-know-how

# LOGO! 8 Benefits

## LOGO! 8



### Feature / Function

- 8 basic modules with Ethernet interface
- improved hardware design
  - new Display
  - reduced size (footprint 4TE)
- Integrated WEB-server Display-/TDE based view
- Innovated LOGO! Soft Comfort
  - improved usability especially for communication tasks (drag & drop)
- Additional GSM Communication module for SMS / GPS and time synchronization

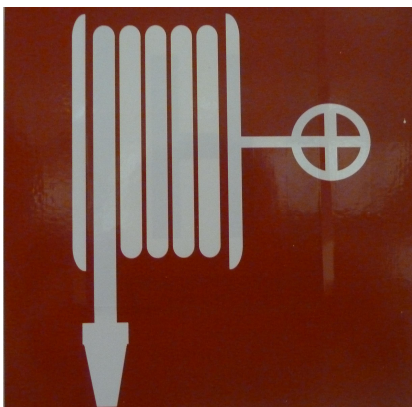
### Benefit

- cost efficient communication with all S7 systems
- No specific cable needed anymore
- Improved visibility of messages and status information
- Space saving
- Very cost efficient remote monitoring and control
- Faster and easier program development and implementation of communication features
- Alarm messaging and remote control via mobile phone, automatic time adjustments, Position monitoring

## LOGO! 0BA8 Migration – Basic data

	<b>0BA6</b>	<b>0BA7</b>	<b>LOGO! 8</b>
Housing	4TE (72 mm)	6TE (108 mm)	<u>4</u> TE ( <u>72</u> mm)
Programming interface	RS232 LOGO! specific	Ethernet (RJ45)	Ethernet (RJ45)
External Memory	LOGO! Memory Card	Standard SD-card	Standard Micro SD-card
Externe Battery	LOGO! Battery Module	-	-
Internal buffer for real time clock	yes - 80 hours	yes – 480 hours (20 days)	yes – 480 hours (20 days)
Max. DI / DQ / AI / AQ	24 / 16 / 8 / 2	24 / 16 / 8 / 2	24 / <u>20</u> / 8 / <u>8</u>
Max. Function blocks	200	400	400
Shift register	1x 8bit	4x 8bit	4x 8bit
Flags digital / analog	27/ 6	27 / 16	64 / 64
Open connectors	16	64	64
LOGO! Networking	-	yes (9x LOGO! 0BA7/8)	yes (9x LOGO! 0BA7/8)
Macro-Function (UDF)	-	yes	yes
Data Logging	-	yes (2000 data sets on SD card)	yes ( <u>20 000</u> data sets on SD card)
Astrotimer, Average, Filter, Stopwatch, Min/Max.	-	yes	yes
Integrated WEB-Server	-	-	<b><i>yes , LOGO! or LOGO! TDE view</i></b>

## Flexible small systems



### Pump control

- Pump Speed control
- Pressure and flow pressure monitoring and control
- Sensor monitoring for wire break
- Valve control

Customer: **Dieter Schäfczuk, Speck Pumpen Verkaufsgesellschaft (Germany)**

Application: pressure systems for boosting the water supply in fire-fighting

### Advantages using LOGO!:

- High quality product, available worldwide
- Easy programming, clear operator guidance at the LOGO! TD
- Additional service information on the base module Display
- Regular automatic test runs

## Comfort and Safety at home



Customer: Miehl family (Germany)

Application: Building automation

### Advantages using LOGO!:

- Energy saving
- More comfort, more safety
- Easy program adjustment
- WLAN accessibility and free App

Unrestricted / © Siemens AG 2014. All Rights Reserved.

### Home automation

- Light control  
With comfort lighting, outside lighting, central control, panic function and presence simulation
- Load control
- Blinds control
- Heating control system

## Diversity in special machinery engineering



Replacement of conventional control components

- Easy wiring
- Smaller control cabinets
- Fast commissioning

Customer: AGBO GmbH and Probitron (Germany)

Mobile drilling systems: controlling and monitoring of functions

### Advantages using LOGO!:

- Excellent performance and yet very cost-efficient, available world wide
- Flexible Adjustments of the modular hardware and reusable macros for customized solutions with standardized program modules
- Time saving documentation function

## LOGO! ....you'd better start right now!

Interested to learn more?

If yes, you find further information on the web at:

[siemens.de/logo](http://siemens.de/logo)

If you want to start rightaway, we have the perfect starter kits for you:

[siemens.de/logo-starterkit](http://siemens.de/logo-starterkit)



Thank you for your attention!

